

max
13' 1"
(4000 mm)



* Technical data and features subject to change without notice **41' 2" (12550 mm) ***

Pumping unit technical data

		HP1608EC
Max. theoretical output	yd ³ /h m ³ /h	210 160
Max. pressure on concrete	psi bar	1160 80
Conc. cylinders (diam. x stroke)	inch mm	9" x 83" 230 x 2100
Concrete hopper capacity	gal l	145 550
Hydraulic circuit		closed



Total weight less than 57,320 pounds, payload to the user always available.

2 versions available - Standard version and longer version (with longer wheelbase) to meet all local road regulations.

Compact stabilization dimensions for easy placement in all types of job sites.

Control System with pumping unit HP1608EC

Smartronic Silver

Integrated color LCD	Diagnostic
Counters	Capsense rear panel
Pumping unit management	

Optional Smartronic Gold



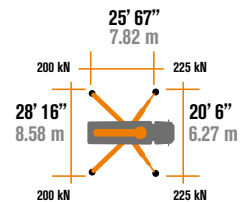
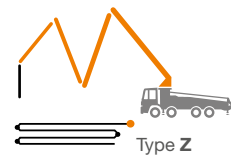
The automatic continuous verification of the center of gravity of the machine guarantees the maximum safety of boom movement and the maximum possible coverage of the job area, even with partial opening of the stabilization.



MBE
Maximum boom
extension control



Automatic
RPM Management



Placing boom technical data

	B4Z 38/34
Pipeline diameter	5" (125mm)
Max. vertical reach	123' 4" (37,6m)
Max. horizontal distance	109' 7" (33,4m)
Min. unfolding height	29' 10" (9,1m)
Number of sections	4
1st section opening angle	90°
2nd section opening angle	180°
3rd section opening angle	237°
4th section opening angle	244°
Angle of rotation	+/-270°
Length of rubber hose terminal	10' 0" (3m)



STEELTECH Series K38L

Standard equipment

Front outriggers "X" style for a quick set-up and easy placement in narrow areas

Driven by Stiebel PTO

"Load Sensing" proportional boom control

Boom rest control

Safety device upon opening of concrete discharge door and hopper grille

Emergency control pad for pumping unit

2 HBC proportional radio controls with 3 manipulators

Emergency radio control cable 65' (20 m)

Medium pressure water pump 19 GPM / 580 PSI (75 L/min / 40 Bar)

Led spotlights for outriggers and hopper

Double thickness concrete pipes, made of high resistant steel with chrome carbide inserts

Washing accessories

High wear resistance of major wear parts: S-Valve, wear plate, compensating ring

Declaration of conformity and use & maintenance manual supplied

Main options

Smartronic Gold (Smartronic Silver + ASC Advanced Stability Control)

Smartronic Advanced: adds to the Smartronic Gold features the ASC2.0, Boom oscillations control ABC (Boom Antibouncing), Boom Automatic Opening & Closing, Hetriconic remote with display

Easytronic Gold (Easytronic Silver + LSC Light Stability Control)

High pressure water pump 3,96 GPM / 2175 PSI (15l/min - 150 bar)

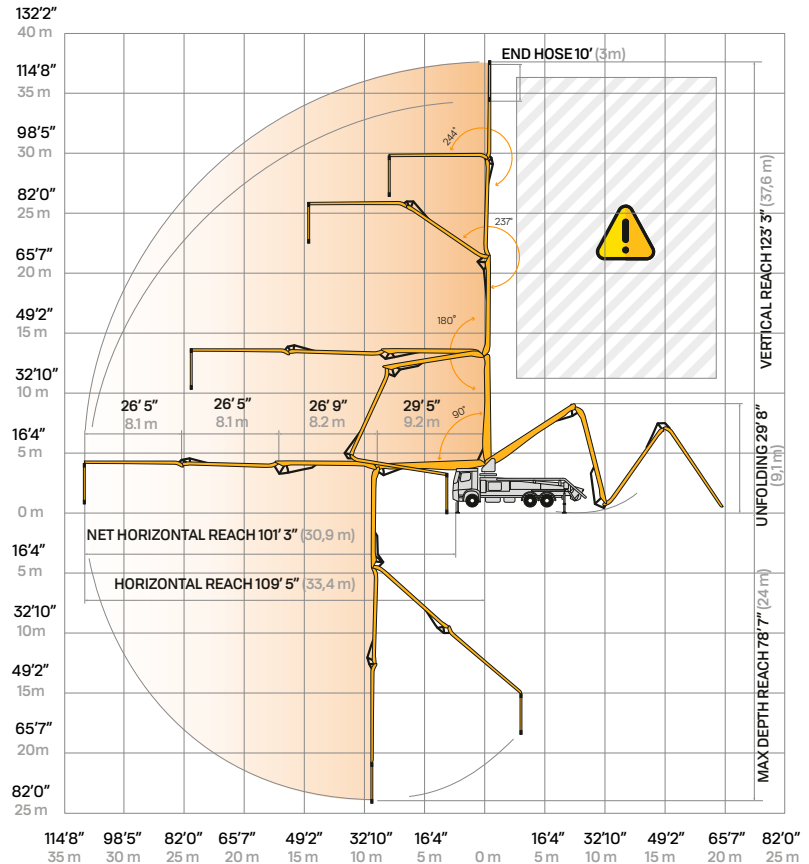
Centralized lubrication system for placing boom

Concrete shut-off valve

Double thickness boom straight pipes, in high resistant steel and carbide chrome inserts - CIFA LLT Long Life Top

Wide customization options available on request, details available on pricelist

Distribution boom B4Z 38/34



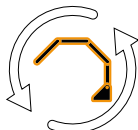
Smartronic Advanced (option)



**Advanced
Stability Control
2.0**



Antibouncing



**Boom
automatic opening
and closing**

Smartronic Video



CIFA North America, Inc. / 4330 Conifer Court, Union Grove, WI 53182
Office: +1 (262) 835-4022 / sales-na@cifa.com



na.cifa.com

