



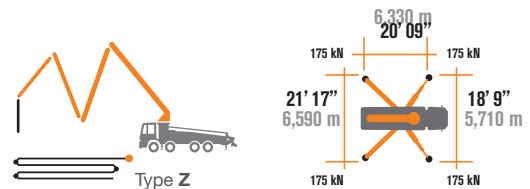
\* Technical data and features subject to change without notice

### Pumping unit technical data

		HP1608EC
Max. theoretical output	yd <sup>3</sup> /h m <sup>3</sup> /h	210 160
Max. pressure on concrete	psi bar	1160 80
Conc. cylinders (diam. x stroke)	inch mm	9" x 83" 230 x 2100
Concrete hopper capacity	gal l	145 550
Hydraulic circuit		closed

↙ Total weight less than 52,000 lbs, payload to the user always available.

Small stabilization dimensions for easy placements in all types of job sites.



### Control System with pumping unit HP1608EC

#### Smartronic Silver

Integrated color LCD	Diagnostic
Counters	Capsense rear panel
Pumping unit management	

#### Optional Smartronic Gold



The automatic continuous verification of the center of gravity of the machine guarantees the maximum safety of boom movement and the maximum possible coverage of the job area, even with partial opening of the stabilization.



**MBE**  
Maximum boom  
extension control



**Automatic**  
RPM Management

### Boom technical data

	B4Z 36/32
Pipeline diameter	5" (125 mm)
Max. vertical reach	116' 10" (35.6 m)
Max. horizontal distance (from the center of the axis of rotation)	102' 3" (31.2 m)
Min. unfolding height	27' 7" (8.4 m)
Number of sections	4
1st section opening angle	90°
2nd section opening angle	180°
3rd section opening angle	237°
4th section opening angle	250°
Angle of rotation	+/-270°
Length of rubber hose terminal	10' (3 m)



# STEELTECH Series K36L

## Standard equipment

Front outriggers "X" style for a quick set-up and easy placement in narrow areas

Driven by Stiebel PTO

"Load Sensing" proportional boom control

Boom rest control

Safety device upon opening of concrete discharge door and hopper grille

Emergency control pad for pumping unit

2 HBC proportional radio controls with 3 manipulators

Emergency radio control cable 65' (20 m)

Medium pressure water pump 19 GPM / 580 PSI (75 L/min / 40 Bar)

Led spotlights for outriggers and hopper

Double thickness concrete pipes, made of high resistant steel with chrome carbide inserts

Washing accessories

High wear resistance of major wear parts: S-Valve, wear plate, compensating ring

Declaration of conformity and use & maintenance manual supplied

## Main options

Smartronic Gold (Smartronic Silver + ASC Advanced Stability Control)

Smartronic Advanced: adds to the Smartronic Gold features the ASC2.0, Boom oscillations control ABC (Boom Antibouncing), Boom Automatic Opening & Closing, Hetricon remote with display

Easytronic Gold (Easytronic Silver + LSC Light Stability Control)

High pressure water pump 3,96 GPM / 2175 PSI (15 l/min - 150 bar)

Centralized lubrication system for placing boom

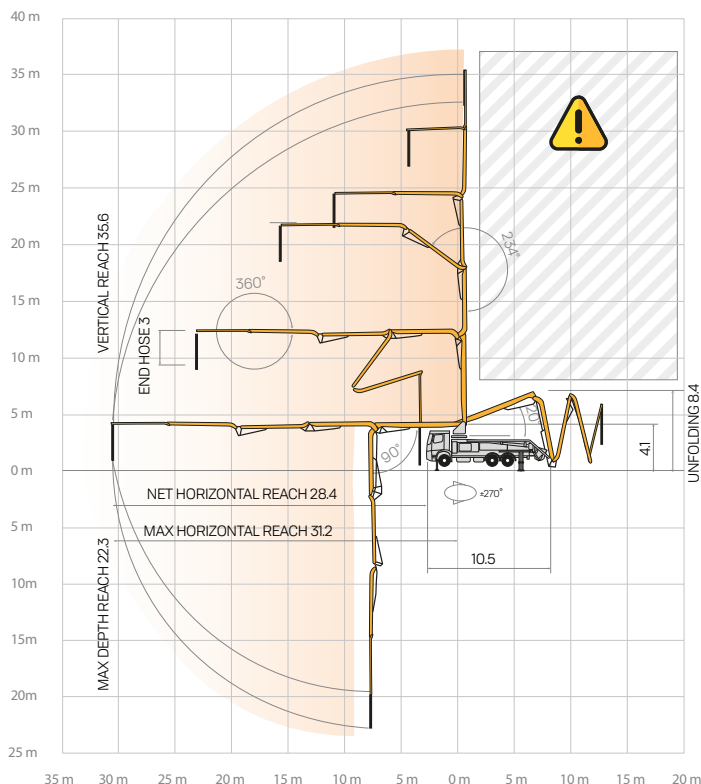
Concrete shut-off valve

Double thickness boom straight pipes, in high resistant steel and carbide chrome inserts - CIFA LLT Long Life Top

**\* Wide customization options available on request, details available on pricelist**

## Distribution boom

B4Z 36/32



## Optional Smartronic Advanced



**Advanced Stability Control 2.0**



**Antibouncing**



**Boom automatic opening and closing**

Smartronic Video

