

MK 28L-5"



max
4000

min. 4260*

* Technical data and features subject to change without notice

Pumping unit technical data

		PB 607 S7	PB 808 S7
Max. theoretical output	m ³ /h	61	81
Max. pressure on concrete	bar	71	81
Max. number of cycles per minute	n°	32	43
Concrete cylinders (diam. x stroke)	mm	200x1000	200x1000
Concrete hopper capacity	l	400	500
"S" valve diameter	"	7	7
Hydraulic circuit		open	open

5" pipes to reduce wear

Compact machine for easy placement

Easytronic machine management system

Control system with PB607 S7 and PB808 S7 pumping unit

Easytronic

- Colour LCD display
- Pumping unit & drum management
- Diagnostics
- Counters

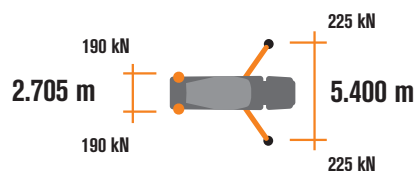
Concrete Mixer Technical data

		80	115
Nominal capacity	m ³	7	9
Drum geometric volume	m ³	12,8	14,6
Filling ratio	%	55	69
Max. drum speed	rpm	14	14
Water tank capacity	l	800	800
Water pump flow rate	l/min-bar	230-15	230-15
Pressure			
Water-meter scale	l	0-500	0-500

Control systems option



The LSC advanced limits the boom rotation to ensure machine stability whenever any front outrigger cannot be fully extended. Machine-front working is possible rotating the boom-pack vertically, with just 10% front outriggers opened.



Placing boom technical data

		MK 28L-5"
Pipeline diameter	mm	125
Max. vertical reach	m	28,1
Max. horizontal distance	m	24,1
Sections number		4
1st section opening angle		90°
2nd section opening angle		185°
3rd section opening angle		253°
4th section opening angle		254°
Rotating angle		-240°/+ 240°
End hose length	m	4



MK28L-5

Placing boom MK 28L-5"

Standard equipment

Placing boom MK28L, 4 sections, pipeline diameter 125 mm, "Z" folding system

Ideal load distribution on the axles to obtain better driving stability

Fully hydraulic outriggers controlled on both sides of the machine with front extension and fixed rear outriggers

Drum made of 30MnB5 steel 4 mm thickness

800 l capacity water tank including water pump

Proportional boom control

Concrete flow regulator

Safety switch on concrete discharging hatch and hopper grid

Wiring and electronics protected against water and rust

Polymer rear mono-axle mudguards with rubber mudflaps

Two proportional radio remote controls with two boom movement speeds, synthesiser for automatic frequency search and concrete flow rate regulator, 20 mt cable supplied

Two additional chutes, with supports for their fixing on counterframe

Vibrator on the concrete hopper grid operated via remote control

Centralized lubrication system for pumping unit

Oil automatic lubrication system for pumping pistons

Additional manual lubrication system for pumping unit

Hard plastic outrigger support plates with relevant housing

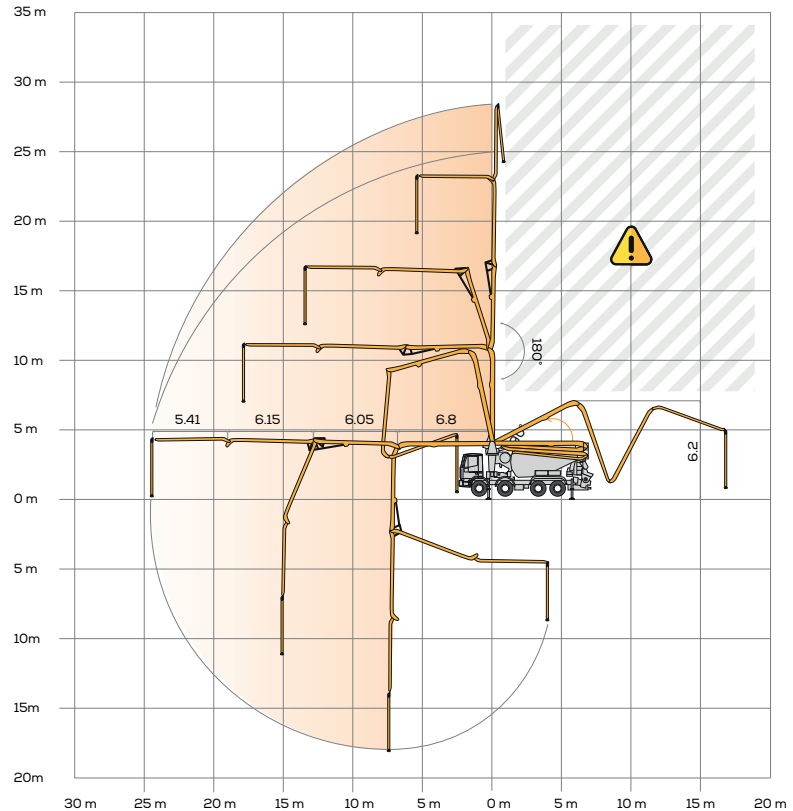
Night light led for pumping unit hopper

Accessories for cleaning and washing

Automatic concrete discharging control with hopper concrete level sensor

Double thickness concrete pipes, in high resistant steel and chrome carbide insert - CIFA Long Life Pipes

Long life wear plate and cutting ring with hard carbide inserts



Options

LSC advanced - Light Stability Control

Fiber-glass hopper cover

HBC Radio remote control, in place of the Hetronic supplied as standard

Placing boom continuous rotation (not available with LSC)

600l capacity pressurized water tank

High pressure water pump + manual washing gun + cable retractor reel

"Ekos" dust blocking device for drum closing

Concrete shut-off valve

Aluminum hose/pipe holder on both sides

Video Smartronic

