

max
4000



min. 4250*

* Technical data and features subject to change without notice

Pumping unit technical data

		PB607S7
Max. theoretical output	m ³ /h	61
Max. pressure on concrete	bar	71
Max. number of cycles per minute	N°	32
Concrete cylinders (diam. x stroke)	mm	200 x 1000
Concrete hopper capacity	l	400
"S" valve diameter	"	7

Total weight lower than 32.000 kg.

Boom: 3 sections, pipeline diameter 100 mm, "Z" folding system.

Wide range of truck chassis compatibility: 3 and 4 axles with different wheelbase.

Control system with pumping unit PB607S7

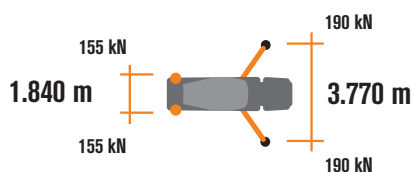
Easytronic

- Colour LCD display
- Pumping unit & drum management
- Diagnostics
- Counters

Control systems options



The LSC advanced limits the boom rotation to ensure machine stability whenever any front outrigger cannot be fully extended. Machine-front working is possible rotating the boom-pack vertically, with just 10% front outriggers opened.



Concrete Mixer Technical data

		RH80
Nominal capacity	m ³	7
Drum geometric volume	m ³	12,8
Filling ratio	%	55
Max. drum speed	rpm	14
Water tank capacity	l	600
Water tank capacity/pressure	l/min - bar	230/15
Liter-counter scale	l	0-500

Placing boom technical data

		MK24L
Pipeline diameter	mm	100
Max. vertical reach	m	23,15
Max. horizontal distance	m	19,15
Sections number		3
1st section opening angle		108°
2nd section opening angle		180°
3rd section opening angle		184°
Rotating angle		+/- 240°
End hose length	m	4



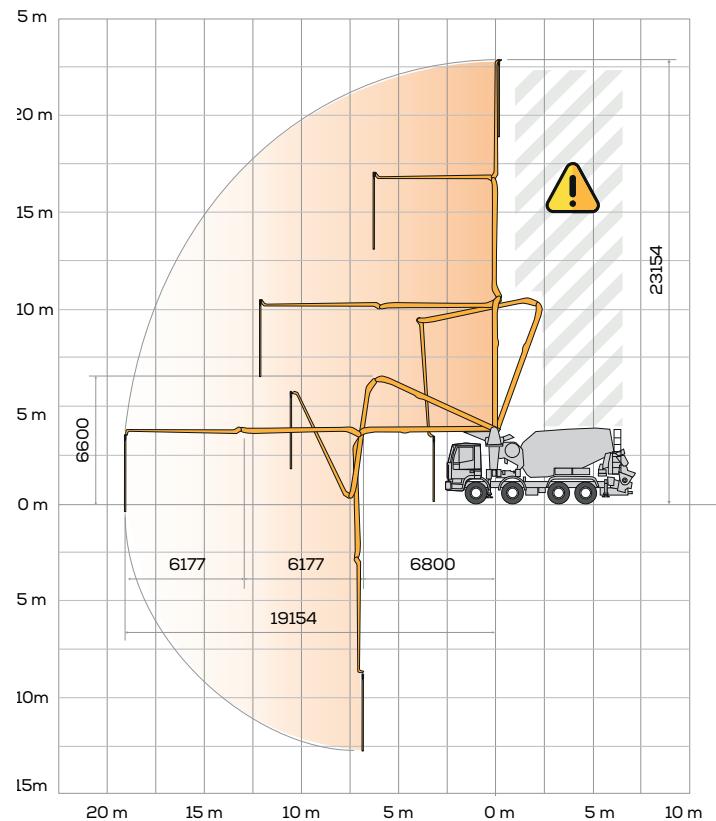
STEELTECH Series

MK24L

Placing boom MK24L

Standard equipment

- Compact and harmonic line, studied for advantageous assembling on 3/4 axles (RH 80)
- Ideal loads distribution on the axles to obtain better driving stability
- Self-supporting frame - torsion free FEM designed
- Outriggers fully hydraulic controlled on both machine sides
- High loading and mixing capacity drum and elliptic bottom
- Placing boom MK24L, 3 sections, pipeline diameter 100 mm, "Z" folding system
- Proportional boom control allowing the operator to control more placing boom sections simultaneously
- Concrete flow rate regulator
- Quiet pumping with high performances: smooth, continuous and easy movements
- Safety device on opening inspection hatch
- Two proportional radio remotes Hetronic with two boom movement speed, synthesiser for automatic frequency search, 8 position joystick and concrete flow rate regulator. 20 mt cable
- Two zinc-coated additional chutes, with supports for their fixing on counterframe
- Remote controlled vibrator on the concrete hopper grid
- Centralized lubrication system for pumping unit
- Automatic lubrication system for pumping pistons by hydraulic oil
- Additional manual lubrication system for pumping unit
- Hard plastic outrigger support plates with relevant housing
- Rear light on hopper
- Polymer rear mono-axle mudguards with rubber mudflaps
- Accessories for cleaning and pipes washing
- Automatic concrete discharging control with hopper concrete level sensor
- Pumping unit with 7 inches "S" shaped valve
- Double thickness concrete pipes, in high resistant steel and insert carbide chrome - CIFA Long Life Pipes
- Long life wear plate and cutting ring with hard carbide inserts



Options

- LSC advanced - Light Stability Control
- Fiber-glass hopper cover
- 2 HBC Radio remote control, in place of the Hetronic supplied as standard
- Placing boom continuous rotation (not available with LSC)
- High pressure water pump + manual washing gun + cable retractor reel
- "Ekos" dust blocking device for drum closing
- Concrete shut-off valve
- Aluminum hose/pipe holder on both sides (PB 607 S7)
- Hydraulic pipeline emergency kit

Video Smartronic

